

5652 CLEM

Lightbars can be ordered in four length. Can be installed individually or as a continuous line.

With very extensive asymmetric lenses, uniform illumination is produced with raking positioning.

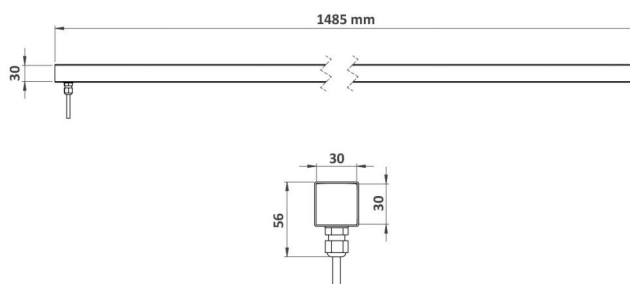
APPLICATIONS:

- Highlight architectural features,
- Facade lighting from a belt-course
- Continuous line
- Direct or indirect lighting of public space
- Underpass

CARACTERISTICS

Length = 1485 mm

- Vandalproof profiled organic glass
- Various mounting accessories possible (fixed or adjustable)
- RGBW options available



Number of LEDs	18
Type of LEDs	Power LEDs. Contact us for hot countries.
Color(s)	Warm white 2700K (F), Warm white 3000K (E), Neutral white 4000K (N), Cool white 6000K (W), Red (R), Amber (O), Green (V), Blue (L), Royal blue (K)

Select your specific requirements with our product configurator, by filtering technical criteria at the following link:

<http://www.lec-lyon.com/5652-clem-r2438>

APPLICATION



Outdoor lighting

Standard flux : **4014 lm**

This value is gained from the optimum output of the LED number, inclusive of optic, for a cool white LED (6000K)

CONFIGURATEUR.EMPLACEMENT



Wall lights

CARACTERISTICS

Weight : **800 g**

Options of luminous effects



RGBW option



Adjustable on 1 axis



Rotating beam



Beam with various openings



Transparent flat window



Colour control system (optional)

Power supply - Control



Cable length: **1 m**



Integrated : 24V-PWM
Remote : 24V-0/10V, 24V-DMX, 24V-DALI

Material



Vandalism-proof, UV-proof, polycarbonate window

Mechanical strength - Waterproofness

IK06 Resists impacts up to IK06

IP67 Tight for temporary immersion

5652 CLEM

This datasheet gives you all the available optics for this product, consistent with the number of LEDs.

URL of this product: <http://www.lec-lyon.com/5652-clem-r2438>

