

2852M PYRAMIDE

Square road/floor marker-lighting

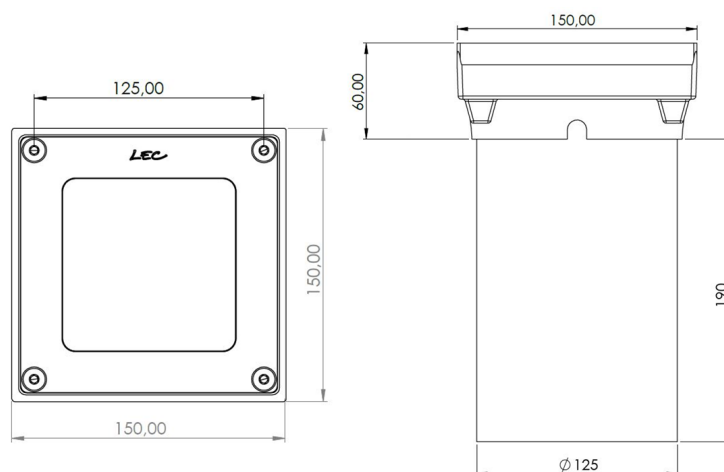
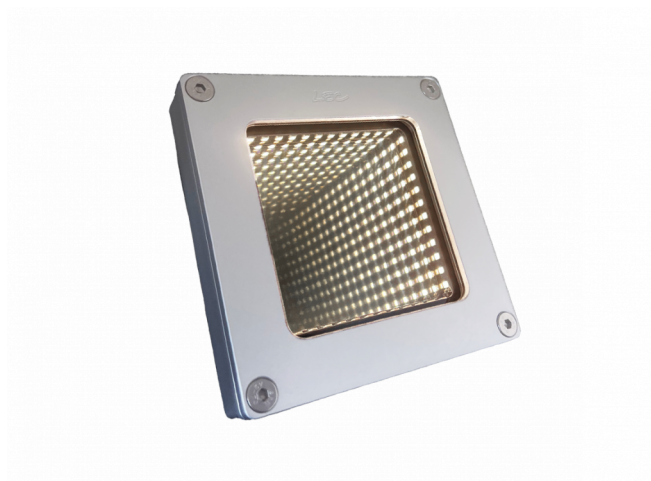
APPLICATIONS:

- Cycle paths and pedestrian paths marker lighting
- Signage for traffic island, pedestrian crossing
- Public space enhancement

CARACTERISTICS

Transparent flat window - Infinite mirror effect

- Colourless anodised machined aluminium body
- Vandalproof organic glass window
- 316L Stainless steel screws
- Flush-recessed
- 2 possible recess dimensions
- Non-steering



Number of LEDs	48
Type of LEDs	120° SMD LEDs (S)
Color(s)	Warm white 2700K (F), Warm white 3000K (E), Neutral white 4000K (N), Cool white 6000K (W), Red (R), Amber (O), Green (V), Blue (L)

Select your specific requirements with our product configurator, by filtering technical criteria at the following link:

<http://www.lec-lyon.com/2852mz-pyramide-r2441>

APPLICATION

- ☒ Marker-lighting

CONFIGURATEUR.EMPLACEMENT

- ☒ Ground flush recessed fittings
- ☐ Ground recessed fittings

CARACTERISTICS

Weight : 1000 g

Options of luminous effects

- ☒ Non adjustable
- ☒ Inclined beam
- ☒ Transparent flat window
- ☒ Colour control system (optional)

Power supply - Control

- ☒ Cable length: 1 m
- ☒ Integrated : 24V-PWM
- ☒ Remote : 24V-0/10V, 24V-DMX, 24V-DALI

Material

- ☒ AL Anodised glazed aluminium
- ☒ PC 2 Vandalism-proof, scratch-proof, UV-proof, polycarbonate window, M2

Mechanical strength - Waterproofness

- IK10** Resists impacts up to IK10
- 20J**
- IP68** Tight for extended immersion