

4019 LUMINY 2

«Medium» version in the Luminy spotlight range.

Installs on roads/floors, wall or poles with custom-adaptable accessories.

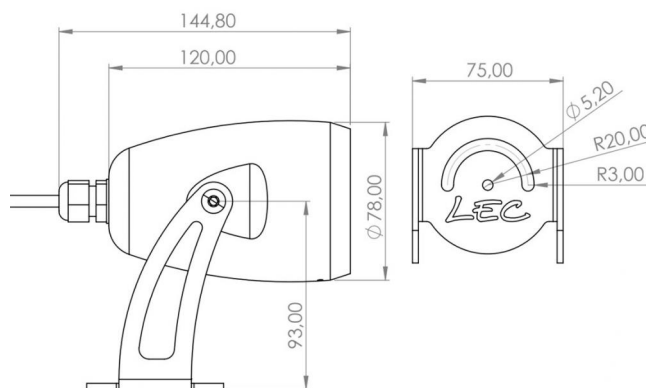
APPLICATIONS:

- Highlight architectural features
- Highlight landscapes
- Path lighting, lanes, street furniture

CARACTERISTICS

Optics 4°, monochromatic only

- Colourless anodised machined aluminium body
- Vandalproof organic glass window
- 316L Stainless steel bracket and screws
- Thermolacquered bracket on request
- RGBW options available



Number of LEDs	1
Type of LEDs	Power LEDs. Contact us for hot countries.
Color(s)	Warm white 2700K (F), Warm white 3000K (E), Neutral white 4000K (N), Cool white 6000K (W), Red (R), Amber (O), Green (V), Blue (L), Royal blue (K)

Select your specific requirements with our product configurator, by filtering technical criteria at the following link:

<http://www.lec-lyon.com/4019-luminy-2-r2442>

APPLICATION



Outdoor lighting

Standard flux : **317 lm**

This value is gained from the optimum output of the LED number, inclusive of optic, for a cool white LED (6000K)

CONFIGURATEUR.EMPLACEMENT



Wall lights



Masts

CARACTERISTICS

Weight : **1070 g**

Options of luminous effects



Adjustable on 2 axis



Rotating beam



Transparent flat window

Power supply - Control



Cable length: **1 m**



Integrated : 24V-PWM
Remote : 24V-0/10V, 24V-DMX, 24V-DALI

Material



Anodised glazed aluminium



Vandalism-proof, scratch-proof, UV-proof, polycarbonate window, M2

Mechanical strength - Waterproofness



Resists impacts up to IK10
20J



Tight for temporary immersion

4019 LUMINY 2

This datasheet gives you all the available optics for this product, consistent with the number of LEDs.

URL of this product: <http://www.lec-lyon.com/4019-luminy-2-r2442>

