

City Hall, Montpellier

These stairs which serve the City Hall square are lit only by the luminous handrail made of ironwork 5682 - School and spotlights 5640 - School-light. The square itself is illuminated by a sky designed by the architects AIK, made up of Ø 50 mm 1750 - Bourgogne, Ø 80 mm 1950 - Lugano and Ø 100 mm 1830 - Lucerne blue lights.

Specifier : L'Agence AIK
Photos credits: François Marti



Application fields
LEC in the heart of town

Localisation
Languedoc-Roussillon region

Products

- [1750 - Bourgogne](#)
- [1830 - Lucerne](#)
- [5640 - School-light](#)

Commissioning
2012

PDF generated on 12.12.2025

City Hall, Montpellier

1750 - Bourgogne



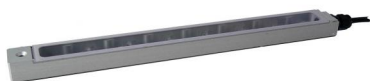
Colourless anodised machined aluminium body



1830 - Lucerne



5640 - School-light



Application fields
LEC in the heart of town

Localisation
Languedoc-Roussillon region

Products
• [1750 - Bourgogne](#)
• [1830 - Lucerne](#)
• [5640 - School-light](#)

Commissioning
2012

PDF generated on 12.12.2025

City Hall, Montpellier

Application fields
LEC in the heart of town

Localisation
Languedoc-Roussillon region

Products

- [1750 - Bourgogne](#)
- [1830 - Lucerne](#)
- [5640 - School-light](#)

Commissioning
2012

PDF generated on 12.12.2025