

## Trinity typical frescoes in Lyon

**Up-lighting of symbolic frescoes in Lyon.**

The typical “trompe l’oeil” wall-painted frescoes of the Trinity located in the 5th district of Lyon, are a tribute to the iconic theater characters: Guignol and his “partners-in-crime” friends.

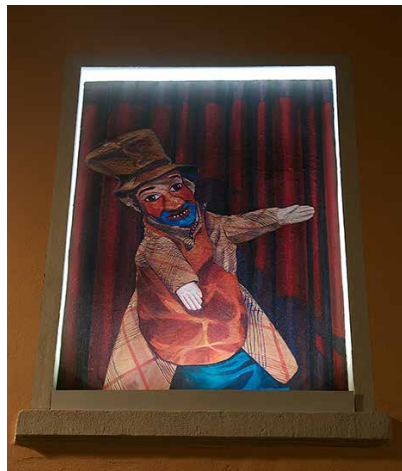
2x [5634-Stripe](#) lightbars were placed on each window sill and were

hidden in box allowing emission of an opened beam at 2°. The latter was set to closest half-degree to illuminate the window frame only ; as the frescoes themselves are up-lit by the reflection of the light beam on the window frame.

*Specifier: Ville de Lyon  
Photos: LEC*



“Guignol” - the main character



“Gnafron” - Guignol’s friend

“Chibroc”  
- the policeman



“Madelon”  
- Guignol’s wife



[5634 Stripe](#)

