

## Roundabout Faveyrolles, Ollioules

Urban planning project of a roundabout of Malartic Faveyrolles, with a small fountain next to the roundabout.

The fountain is lit with submersible stainless steel spotlights 4020-Luminy 2.

The 2 trees are lit with ground recessed spotlights 5716-Alleward. The ground protruding marker-lights 1832-Angouleme chenillard (chase) are installed on the roundabout to indicate traffic direction.

Funding: TPM (community of Toulon and its suburbs)  
Lighting designer: Gilles GENETELLI  
Installer: SATELEC TOULON NICE  
Photo credits: LEC



Application fields  
LEC on the road

Localisation  
Provence-Alpes-Côte-d'Azur region

Products  

- [1832 - Angouleme](#)
- [5716 - Alleward](#)

Commissioning  
2013

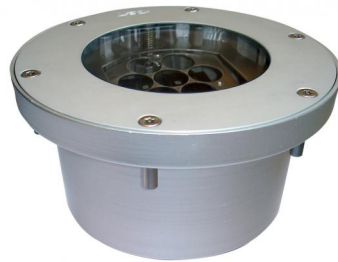
PDF generated on 25.02.2021

## Roundabout Faveyrolles, Ollioules

### 1832 - Angouleme



### 5716 - Allevard



---

Application fields  
LEC on the road

Localisation  
Provence-Alpes-Côte-d'Azur region

Products  
• [1832 - Angouleme](#)  
• [5716 - Allevard](#)

Commissioning  
2013

PDF generated on 25.02.2021